



Diss Street, Shoreditch, E2

BUTLER  STAG





**Tucked away in this peaceful private cul-de-sac moments from Columbia Road is a well presented one bedroom flat with own patio garden and off street parking.**



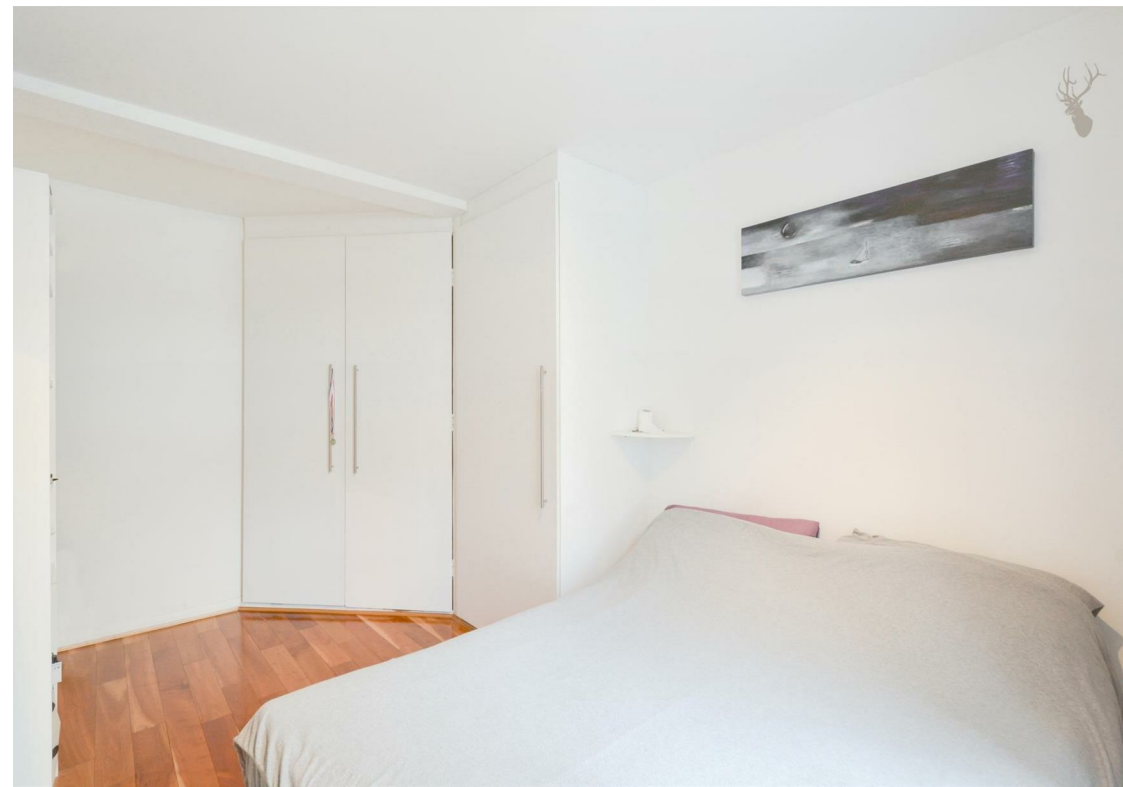
- One Double Bedroom
- Off Street Parking
- Well Presented
- Close To Transport Links
- Private Patio Garden
- Private Cul-De-Sac
- Sought After Location
- Furnished - Can Be Flexible

The property benefits from solid wood flooring throughout and comprises a reception to the front, double bedroom with fitted wardrobes, contemporary bathroom, reception and a separate kitchen with access to the patio.

Diss Street is ideally located within close proximity to the City and vibrant hot spots including Columbia Road, Shoreditch, Brick Lane, Hoxton Square and Spitalfields. Hoxton Overground is just moments away while Old Street station (Northern Line and National Rail) is also close by.

Offered furnished but can be flexible.



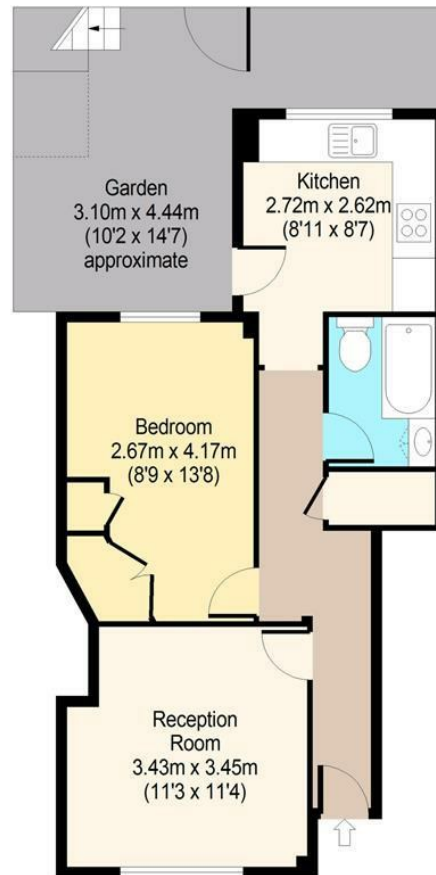


**Vaughan Estate,  
Diss Street, E2**



**Ground Floor**

Approx. 42 Sq. meters (452 Sq. feet)



Total area: approx. 42 Sq. meters (452 Sq. feet)

For illustration purposes only - not to scale

[www.londonpropertyassessments.co.uk](http://www.londonpropertyassessments.co.uk)

IMPORTANT NOTICE - These particulars have been prepared in good faith and they are not intended to constitute part of an offer or contract. We have not performed a structural survey on this property and the services, appliances and specific fittings have not been tested. All photographs, measurements, floor plans and distances referred to are given as a guide and should not be relied upon.

**BUTLER & STAG**

☎ 020 8102 1236

🏠 508 Roman Road, Bow, London, E3 5LU

✉ [bow@butlerandstag.com](mailto:bow@butlerandstag.com)

[www.butlerandstag.uk](http://www.butlerandstag.uk)